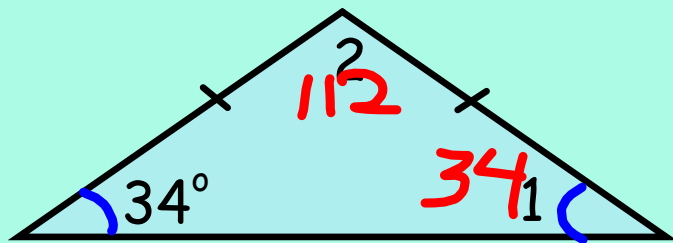
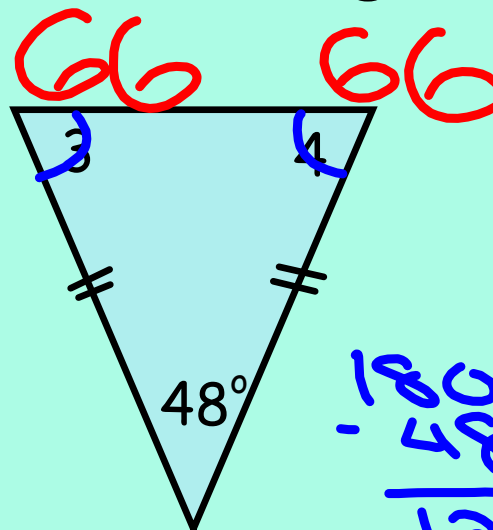


11/13/19 - Warm Up Problem

Find the measure of each numbered angle.



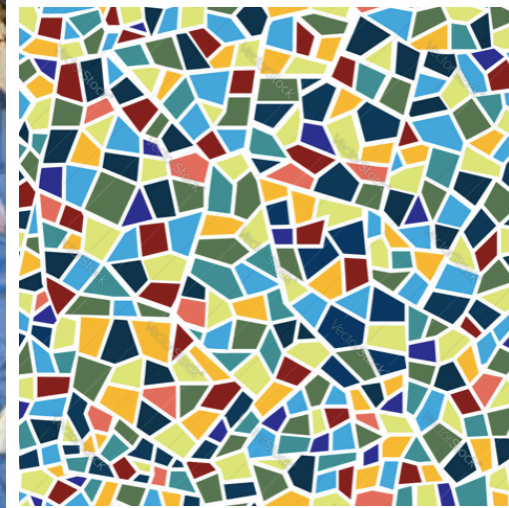
$$\begin{array}{r}
 + 34 \\
 34 \\
 \hline
 68
 \end{array}
 \qquad
 \begin{array}{r}
 180 \\
 - 68 \\
 \hline
 112
 \end{array}$$



$$\begin{array}{r}
 180 \\
 - 48 \\
 \hline
 132 \div 2
 \end{array}$$

Mosaic:

A surface decoration made by inlaying small pieces of colored material (stone/glass/tile) to form pictures or patterns



Congruent Triangle Mosaic Project

Challenge:

Draw an abstract mosaic design which meets all of the requirements listed below. You will be working on the skills of precision, attention to detail, classifying triangles, and determining if triangles are congruent.

Design Requirements:

- 1) Every triangle must be congruent to at least one other triangle in the design
- 2) You must have at least 30 triangles in the design
- 3) All 30 triangles cannot be congruent to each other – go for more variety!
- 4) You can include quadrilaterals, but there must be more triangles than quadrilaterals in your design
- 4) Your design can be any colors you want, but it should be colored (more than just black and white)

Handwritten text in purple ink, oriented vertically on the left side of the page. The text is stylized and appears to be a name or title, possibly "MOSAIC PROJECT".

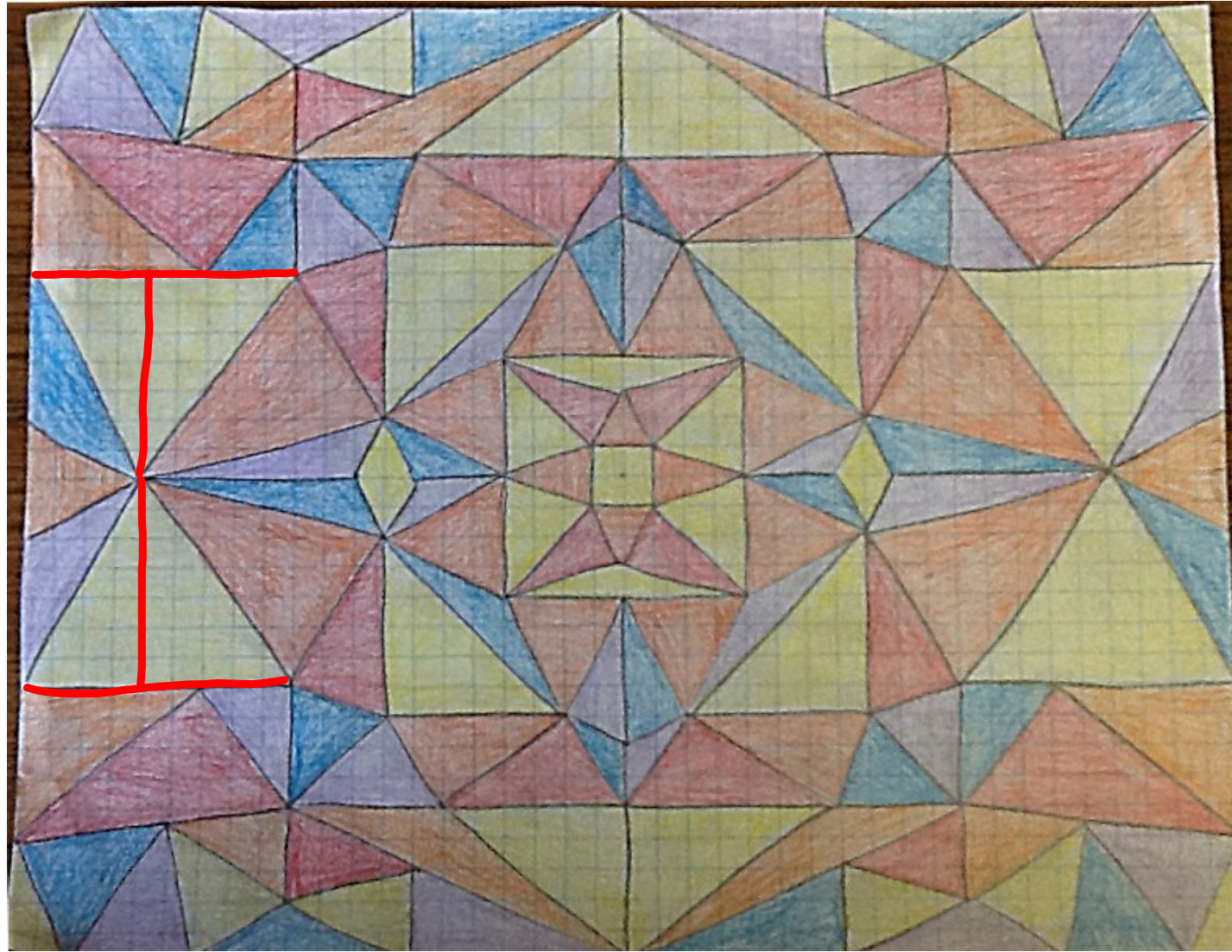
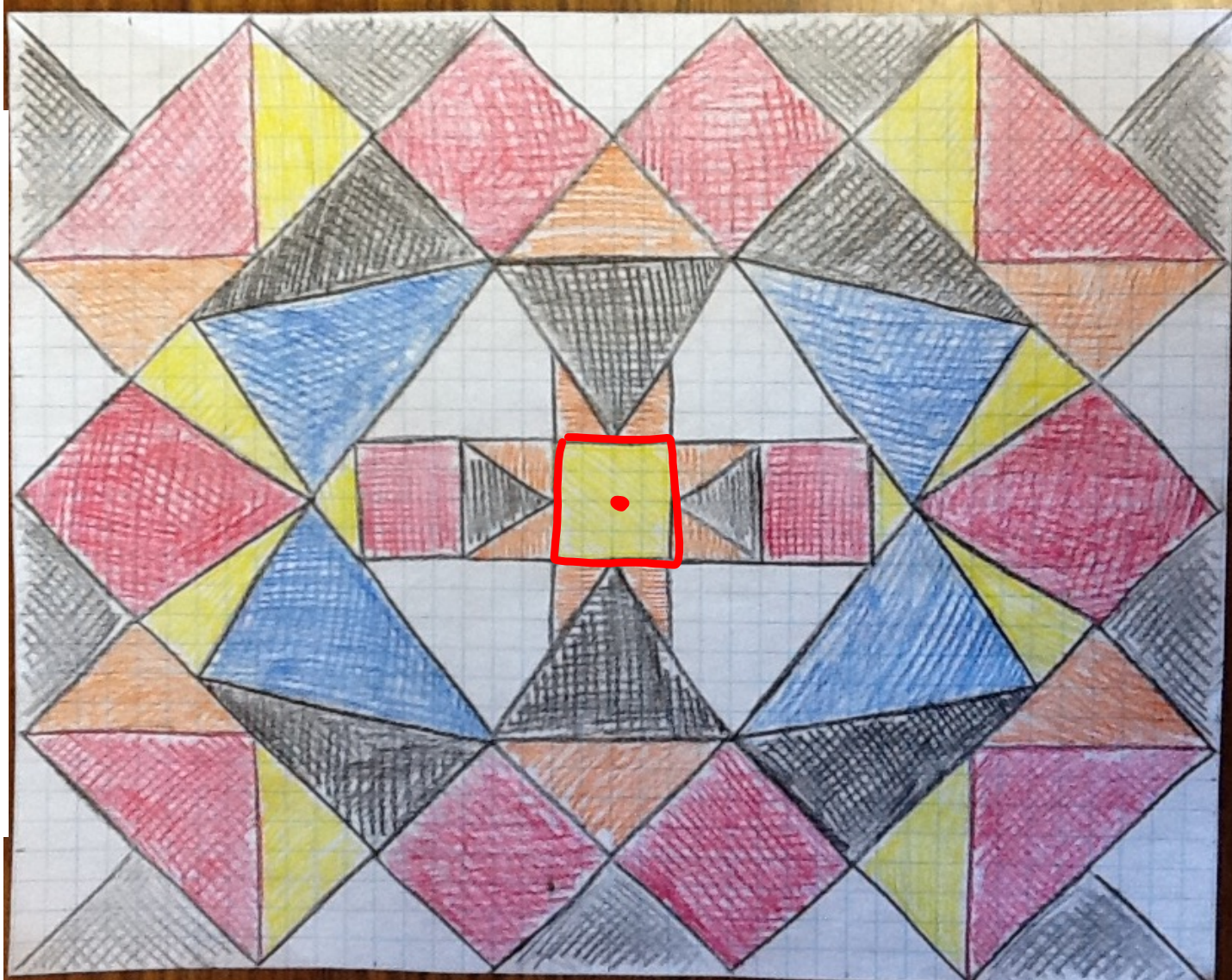


Figure 10: A complex geometric pattern composed of many triangles and squares, each filled with a different color or texture. The central square is highlighted with a red border and a red dot in its center.



Step 1: Draw your design

- Use graph paper and ruler - fill the whole grid
- Color when your done drawing

Step 2: Classify your triangles

- Fill in the table of the back of the instructions

Shape	Number Used
Scalene Triangles	
Equilateral or Isosceles Triangle	
Rectangle	
Square	
Any other Quadrilateral	
Total Number of Triangles and Quadrilaterals	

Step 3: Written Reflection

- Answer the questions on the back of the instruction paper