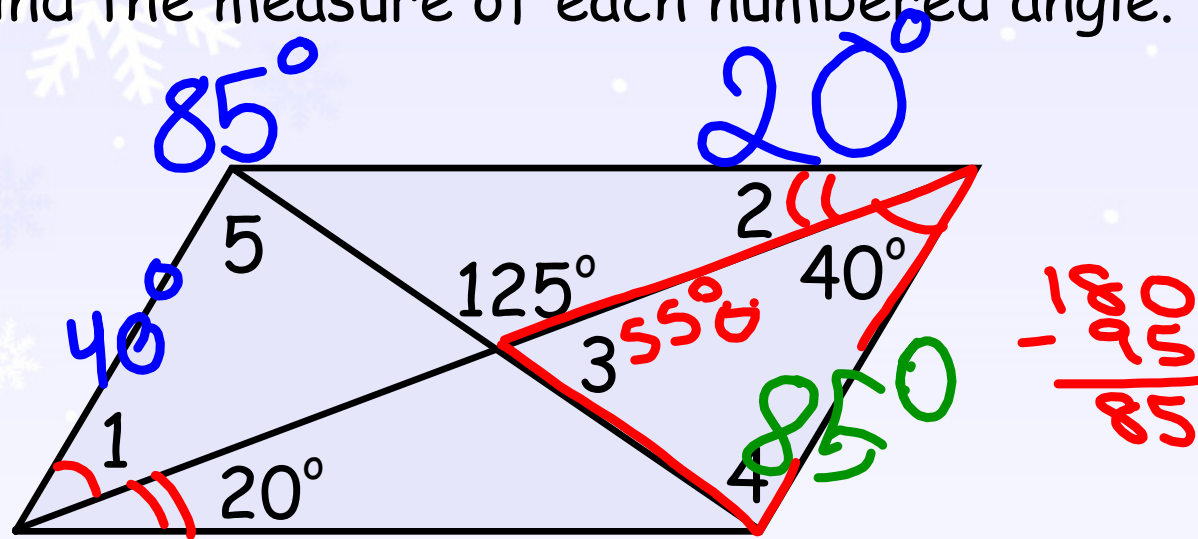


12/11/19 - Warm Up Problem

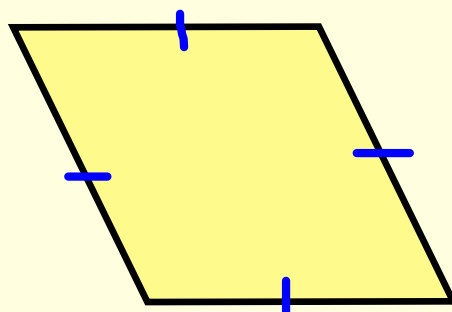
Find the measure of each numbered angle.



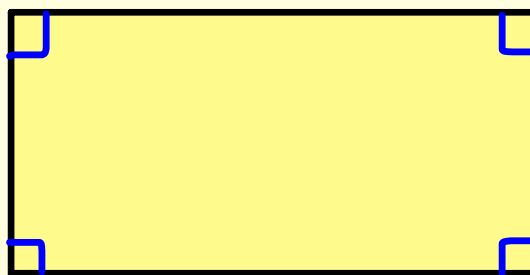
Section 6.4 - Rhombuses, Rectangles, and Squares

Goal: Use properties of rhombuses, rectangles, and squares to find missing measures

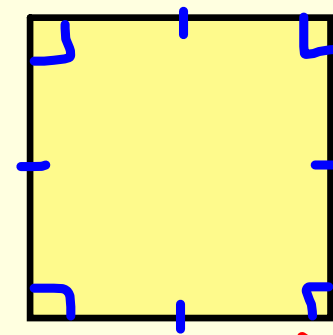
Is each of these quadrilaterals a parallelogram?
How do you know?



Opp. sides
are \cong



Opp. angles
are \cong



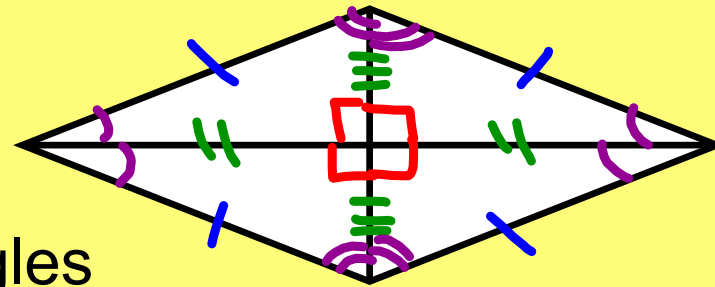
Opp. sides
and angles \cong

Rhombus:

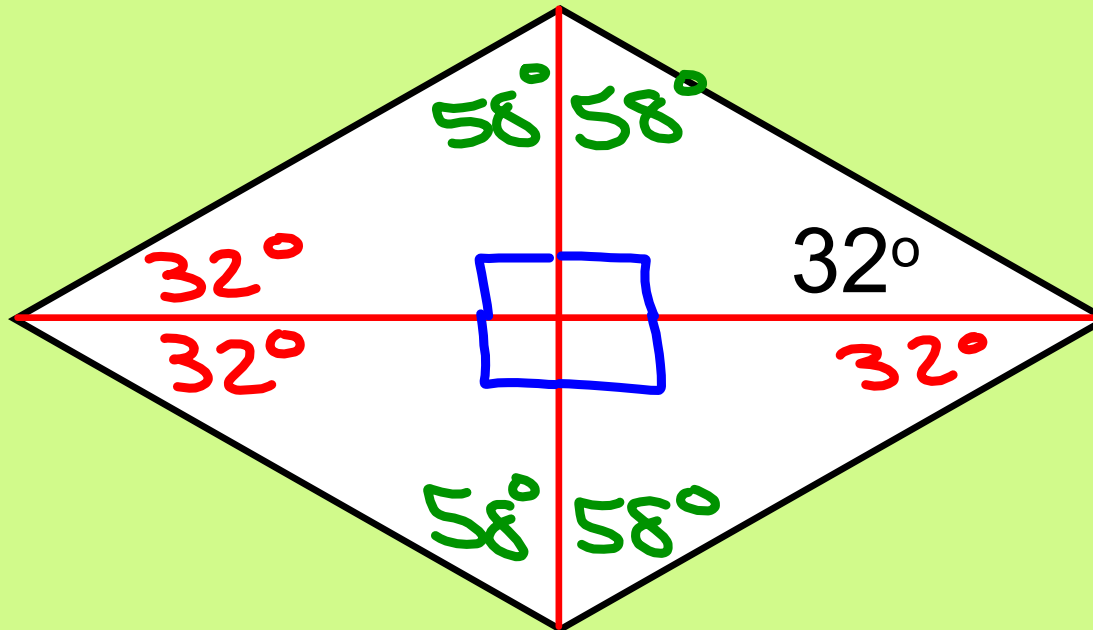
a parallelogram with four congruent sides

A rhombus has all the properties of a parallelogram plus three more properties of its own...

1. All four sides are congruent
2. Diagonals are perpendicular
3. Diagonals bisect opposite angles



Fill in the measure of each angle in the rhombus.



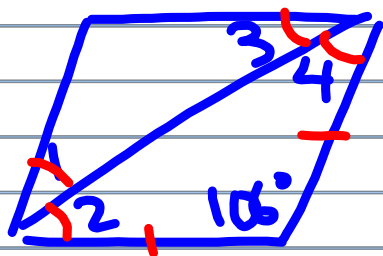
Assignment:

Section 6-4

pg. 379

(9-17) - we will add on to this assignment next class

9



$$\begin{array}{r} 180 \\ - 106 \\ \hline 74 \end{array}$$

$$\frac{74}{2} = 37$$

$$\angle 1 = \angle 2 = \angle 3 = \angle 4 = 37$$